



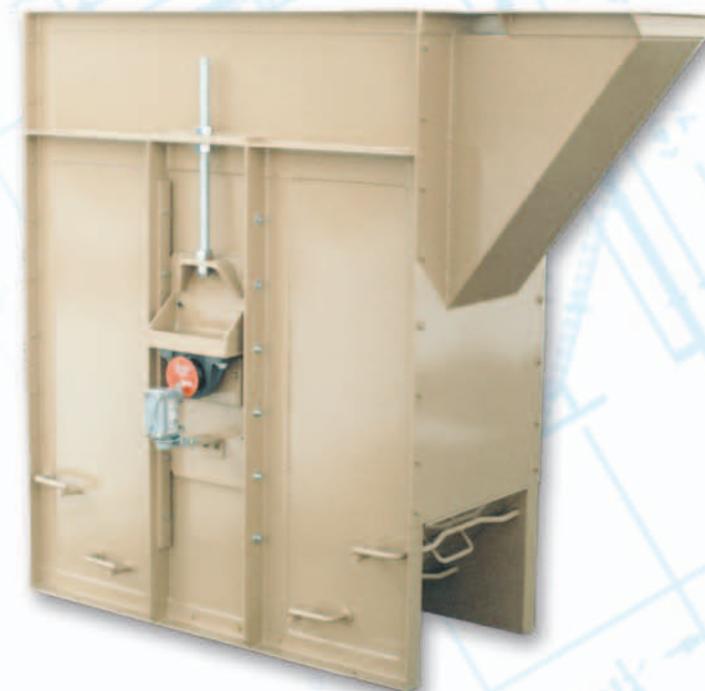
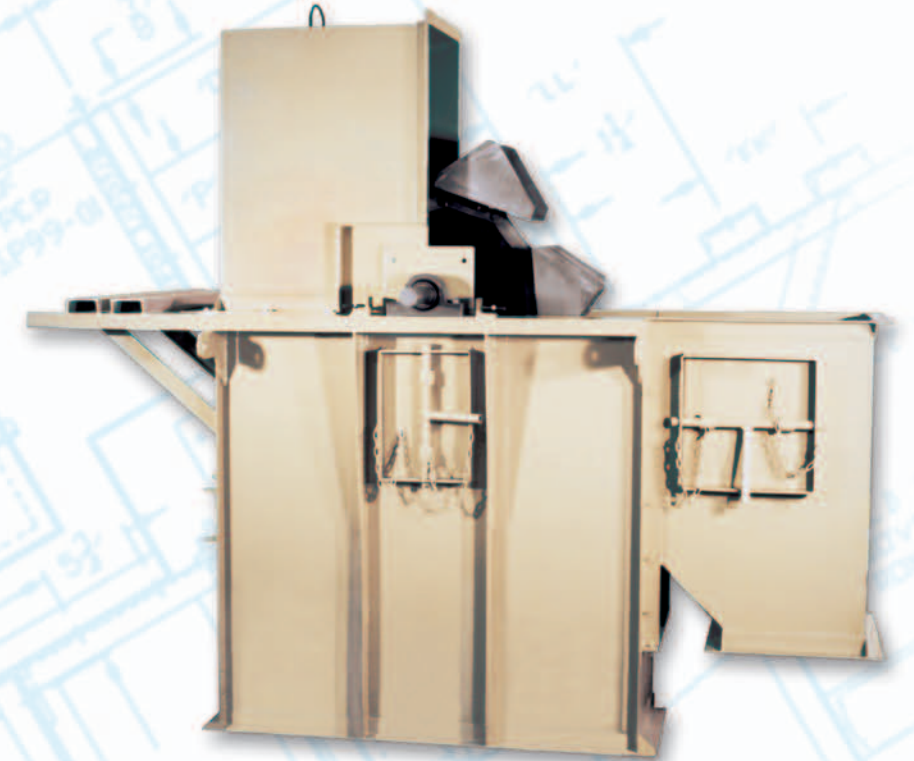
**Call HAWTHORNE-SEVING, INC.
for other bulk material
handling equipment.**



**Belt Conveyors • Screw Conveyors
Drag Conveyors • Diverter Valves • Gates
Structures • Distributors • Bag Unloaders**



HAWTHORNE-SEVING, INC.



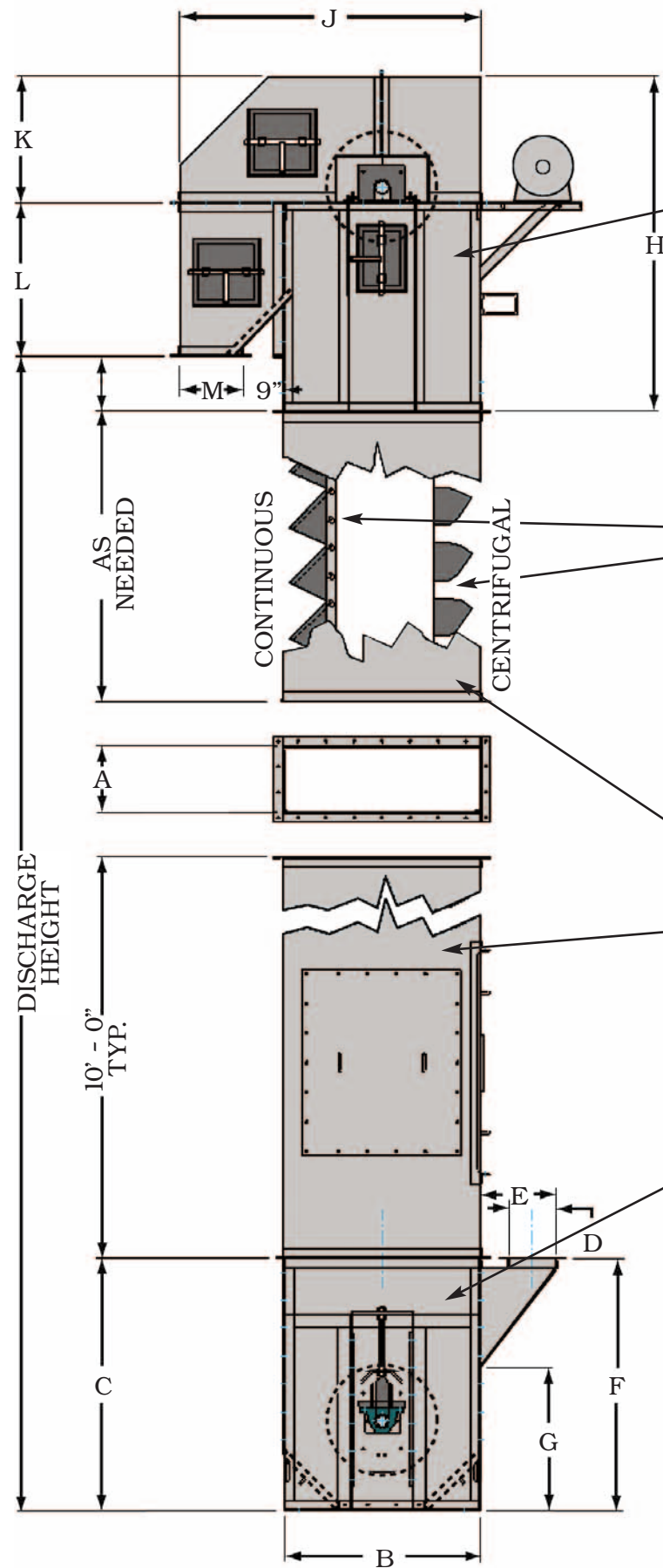
HAWTHORNE-SEVING, INC.

320 West Main Street • P.O. Box 456 • Beavercreek, Ohio 45808-0456
Ph. (419) 643-5531 • Fax (419) 643-4762 • E-mail hsi@wcoil.com

SEV-02/01

INDUSTRIAL BUCKET ELEVATORS

HAWTHORNE-SEVING, INC.
manufactures a complete line
of heavy duty bucket elevators
for industrial service.



Head:

- Self-aligning double row spherical roller bearings
- Replaceable discharge section
- Bolted cover
- Access openings with cam-lock covers
- Felt shaft seals
- Factory mounted drive
- Hardened sprocket or crowned and lagged pulley
- Lifting lugs

Belt or Chain

Buckets:

- Centrifugal discharge
- Continuous discharge
- Carbon steel
- Stainless steel
- Ductile iron
- Polyethylene
- Nylon
- Polyurethane

Casing:

- Continuously welded seam construction
- Jig positioned solid welded angle flanges
- Large bolted access panels with inspection plates

Boot:

- Self-aligning ball bearings
- Bolted construction
- Plated steel take-up screws
- Cam-lock cleanout plates
- Felt shaft seals

Accessories & Options:

- Shaft-mounted or base mounted reducers with chain or V-belt drive
- Steel thickness from 10 gauge to 1/4"
- Various abrasion resistant linings available for inlet and discharge
- Bolt-on OSHA approved ladder, cage and service platforms
- Gravity take-ups with internal bearings
- Stainless steel construction
- Boot shaft under-speed sensor

BUCKET ELEVATOR SELECTION

Bucket Elevators are an efficient, reliable and completely enclosed means of vertically conveying most dry bulk materials. The two basic types of bucket elevators are centrifugal discharge and continuous discharge. Choose the type best suited for your application based on the following descriptions:

- **CENTRIFUGAL DISCHARGE** elevators are used for most applications to elevate free flowing granular and powder materials. Centrifugal elevators normally operate at medium speed of 225 - 300 feet per minute (fpm) and the buckets are spaced apart to allow sufficient space between buckets for filling and emptying. The buckets typically dig product from the boot and discharge by centrifugal force, throwing the product into the head discharge chute.
- **CONTINUOUS DISCHARGE** elevators operate at slow speed and are therefore commonly used to elevate fragile products or products with large lumps or very low bulk density. Buckets are placed close together (continuous). Product is loaded directly into the buckets in the boot and discharges from the buckets by gravity, flowing over the front of the preceding bucket into the head discharge chute.
- **ELEVATOR SIZE** is determined from the following charts. The third column in each chart specifies the volume which each elevator can handle with style AA iron buckets at standard spacing, standard speed and 75% bucket fill. The lowest bulk density of the product must be used to calculate the volumetric capacity. Bucket elevators should not be choke loaded. They must be fed uniformly at or below the specified capacity. Select from the appropriate chart the elevator which has capacity equal to or greater than the required capacity.
- **BUCKETS** can be mounted on **belt** or **chain**. Belt is preferable for most applications since it is less expensive and easy to maintain. Chain is normally used for high temperature service above 180° F and for other severe duty applications which would cut or deteriorate the belt. Choice of bucket and casing construction is dependent upon the corrosive, abrasive and temperature characteristics of product.

CONTINUOUS DISCHARGE ELEVATORS

MODEL NUMBER*	BUCKET SIZE	CU. FT. PER HR.	FPM	BUCKET SPACING	CASE SIZE
BE-CO_-0805	8 x 5 x 7 ³ / ₄	590	125	8	14 x 42
BE-CO_-1005	10 x 5 x 7 ³ / ₄	760	125	8	14 x 42
BE-CO_-1007	10 x 7 x 11 ⁵ / ₈	1010	125	12	14 x 42
BE-CO_-1207	12 x 7 x 11 ⁵ / ₈	1230	125	12	18 x 48
BE-CO_-1407	14 x 7 x 11 ⁵ / ₈	1420	125	12	18 x 48
BE-CO_-1408	14 x 8 x 11 ⁵ / ₈	1820	125	12	18 x 48
BE-CO_-1608	16 x 8 x 11 ⁵ / ₈	2100	125	12	22 x 54
BE-CO_-1808	18 x 8 x 11 ⁵ / ₈	2360	125	12	22 x 54
BE-CO_-2410	24 x 10 x 11 ⁵ / ₈	4780	125	12	28 x 54

CENTRIFUGAL DISCHARGE ELEVATORS

MODEL NUMBER*	BUCKET SIZE	CU. FT. PER HR.	FPM	BUCKET SPACING	CASE SIZE
BE-CE_-0604	6 x 4	270	225	13	10 x 35
BE-CE_-0805	8 x 5	540	260	16	14 x 42
BE-CE_-1006	10 x 6	1040	268	16	14 x 42
BE-CE_-1207	12 x 7	1670	268	16	18 x 48
BE-CE_-1407	14 x 7	2100	268	16	18 x 48
BE-CE_-1408	14 x 8	2300	268	18	18 x 48
BE-CE_-1608	16 x 8	3060	306	18	22 x 54
BE-CE_-1808	18 x 8	3470	306	18	22 x 54

*COMPLETE MODEL NUMBER BY ADDING B OR C TO INDICATE **BELT** OR **CHAIN**.

STANDARD BUCKET ELEVATOR DIMENSIONS-INCHES

ELEVATOR NUMBER	A	B	C	D	E	F	G	H	J	K	L	M	PULLEY DIA.	CONT. RPM	CENT. RPM
BE-CE_-0604	10	35	54	8	14	48	28	64	54	22	30	10	20	-	43
BE-CE_-0805	14	42	54	10	16	54	31	72	64	27	33	13	24	20	41
BE-CO_-1006															
BE-CO_-1007															
BE-CE_-1207	18	48	60	12	18	60	34	80	72	32	36	15	24	20	41
BE-CE_-1407															
BE-CE_-1408															
BE-CE_-1608	22	54	66	14	20	66	37	87	80	36	39	17	30	16	38
BE-CE_-1808															
BE-CO_-2410	28	54	66	14	20	66	37	87	80	36	39	17	30	16	38